



29×50mm スピーカ
1.1×2inch Speaker

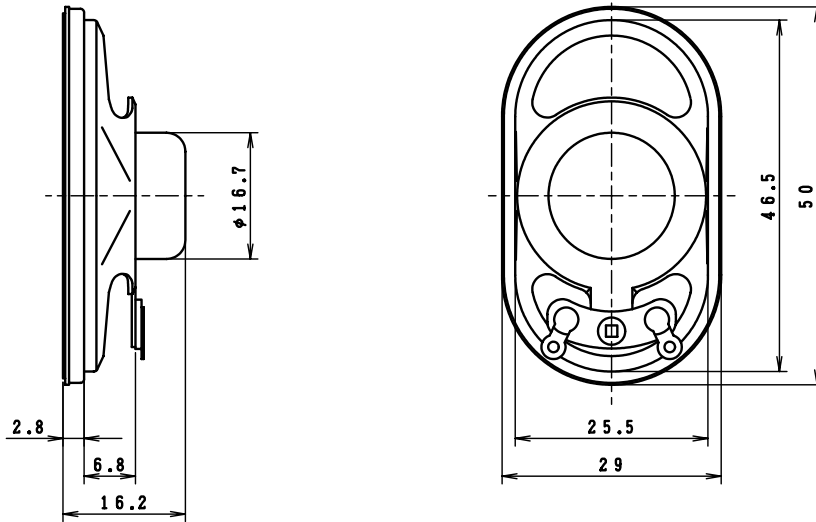
Model No.

S12E2A02-1

26 June 2003

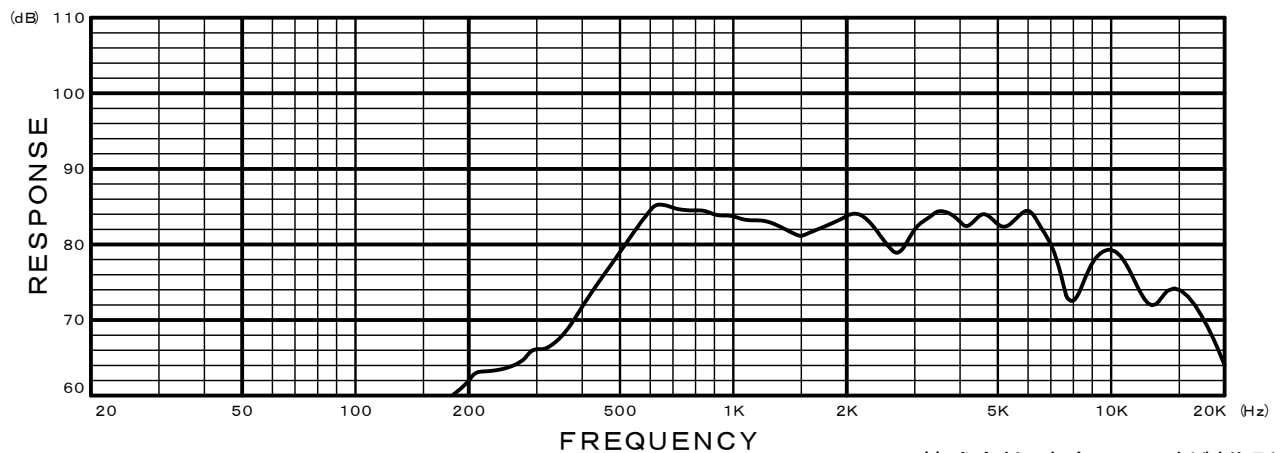
■ゼネラルタイプ

■General Type



■Specifications■

Nominal Impedance	-----	8 Ω
Nominal Power	-----	2W
Maximum Power	-----	4W
Resonance Frequency	-----	600Hz
Effective Frequency Range	-----	F ₀ ~7,000Hz
Sound Pressure Level	-----	82.5dB W/m
Magnet Size	-----	φ10×t3mm
Magnet Weight	-----	1.9g(0.07oz.)
Net Weight	-----	15g(0.529oz.)



株式会社 東京コーン紙製作所
TOKYO CONE PAPER MFG.CO.,LTD.